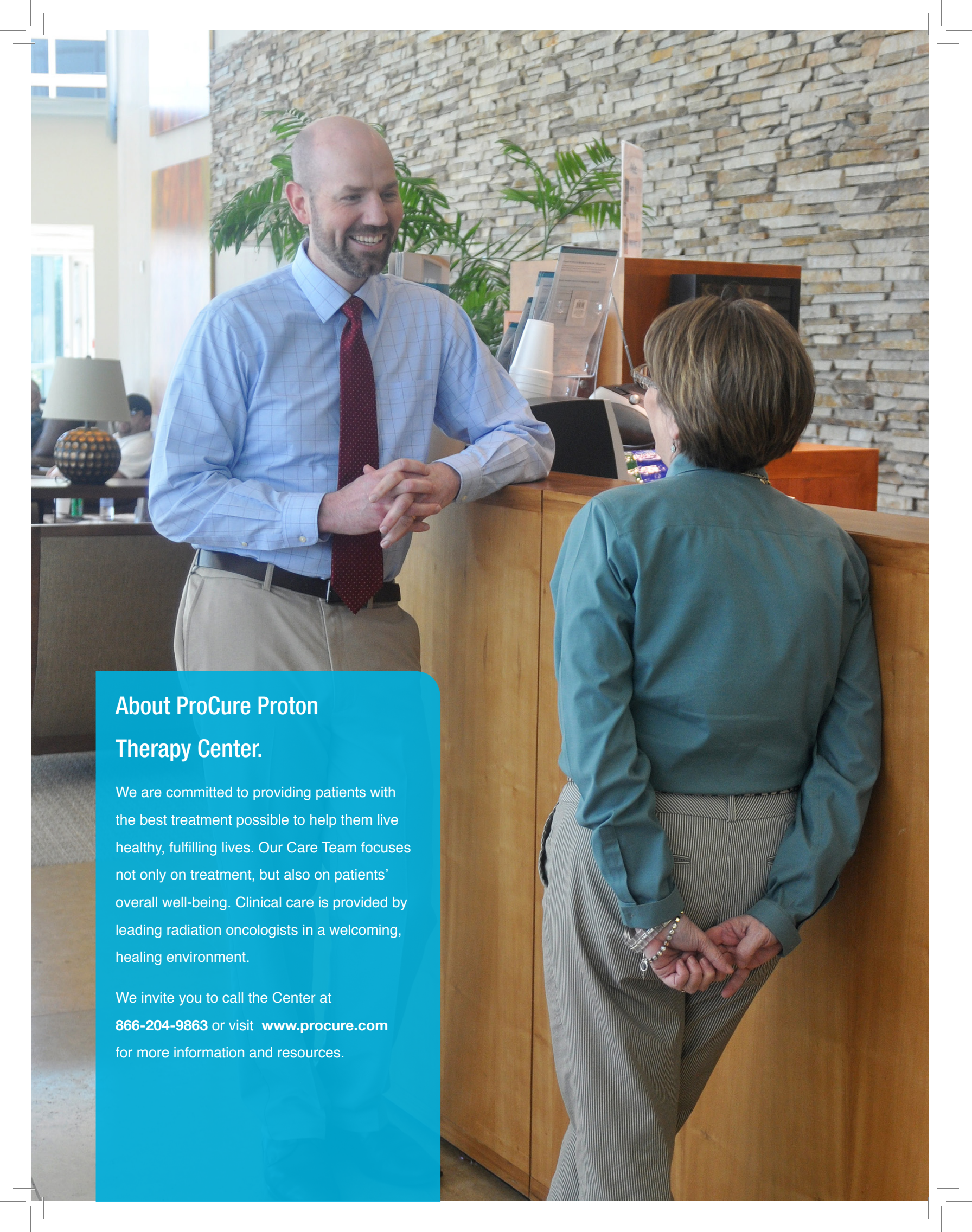


PATIENT'S GUIDE



The Precision of Protons. The Power of Caring.

A guide to proton therapy for
patients with cancer.

A photograph of a man and a woman in a professional setting. The man, on the left, is bald with a beard, wearing a light blue button-down shirt, a red patterned tie, and khaki pants. He is smiling and has his hands clasped in front of him. The woman, on the right, is seen from the back, wearing a teal long-sleeved shirt and grey and white striped pants. She is standing at a wooden reception desk. The background features a stone wall and some green plants.

About ProCure Proton Therapy Center.

We are committed to providing patients with the best treatment possible to help them live healthy, fulfilling lives. Our Care Team focuses not only on treatment, but also on patients' overall well-being. Clinical care is provided by leading radiation oncologists in a welcoming, healing environment.

We invite you to call the Center at **866-204-9863** or visit **www.procure.com** for more information and resources.

Welcome. An introduction to the benefits of proton therapy.

When you or a family member is diagnosed with cancer, you'll probably have a lot of questions and difficult decisions to make about your treatment.

But there is good news. There have been many medical and technological advances and improvements, which means more and better treatment options for you.

One of these advances is proton therapy. It's a very precise and effective kind of radiation treatment that has fewer side effects and treats many of the same tumors as standard X-ray radiation. It causes less damage to healthy tissue and can be an effective option for many patients whose doctors have recommended radiation treatment.

This brochure will walk you through the benefits of proton therapy and help you make important decisions about your treatment options.

Each person's experience is unique. So as you begin your own fight against cancer, we hope you find this brochure helpful and encouraging.



01

Proton therapy— advanced technology with many advantages.

Proton therapy is one of the most precise and advanced forms of radiation treatment available today. When compared to standard X-ray radiation, it treats many of the same tumors and is equally effective at destroying cancer cells. However, there are some distinct and important differences between the two therapies. The most significant one is that proton therapy results in less damage to healthy tissue so patients experience fewer side effects.

Precision therapy. Passionate care.

Welcome to the ProCure Proton
Therapy Center in Oklahoma City.

The Center is the sixth proton therapy center to open in the United States and offers specialized treatment for many kinds of tumors. We combine innovative technologies designed to deliver proton therapy with a passion for creating a healing environment. The Center's experienced doctors and highly skilled medical professionals are dedicated to providing exceptional care for you and your family—every step of the way.

To find out more, please call the Center at **866-204-9863** or visit us at **www.procure.com**.



Proton therapy. More precise. More benefits.

X-ray vs. proton therapy.

X-rays and protons are equally effective at destroying cancer cells, but there are some important benefits of proton therapy. Unlike X-rays, protons (heavily, positively charged atomic particles) can be precisely controlled so that most of their radiation ends up directly in the tumor.

This is an especially important benefit when the tumor is located near critical organs or structures such as the brain, heart or spinal cord. With standard X-ray radiation, more energy is released as X-rays travel through the patient's body, both before and after they reach the tumor site, damaging healthy tissue along the path.

With proton therapy, there is also a lower occurrence of secondary tumors which may appear many years after receiving radiation treatment.

Effective therapy. Less damage.

As protons enter the body, they do release some energy, but the amount is much less than X-ray radiation. The proton radiation dose is designed to peak at the tumor. After irradiating the tumor, the dose falls to zero. This means there is less damage to healthy tissue and fewer side effects and complications. Because it is so precise, proton therapy provides effective therapy with fewer side effects.

Particularly effective for children.

Proton therapy can be especially beneficial for children, who can experience more serious short- and long-term side effects from X-ray radiation than adults. Since their bodies are still growing, children are more sensitive to healthy tissue damage caused by X-rays. Clinical studies suggest that proton therapy reduces the risk of growth and developmental problems, as well as secondary tumors.

03



Is proton therapy right for you?

Proton therapy is effective in treating a wide variety of cancer types. The tumors listed below are the ones that often benefit the most from proton therapy. Additional tumors may also be treated with proton therapy. Only a doctor can help you determine the best treatment approach for you.

- Base-of-skull tumors
- Brain tumors
- Breast cancer
- Gastrointestinal tumors
- Head and neck cancer
- Lung cancer
- Melanoma of the eye
- Pediatric tumors
- Prostate cancer
- Tumors near the spine

Who benefits most from proton therapy?

Proton therapy is recommended for many patients, including children. The precision of protons can be particularly beneficial for patients whose tumors are near critical organs or structures (such as the brain, heart or spinal cord), patients whose cancers have recurred after prior treatment and patients who have a high likelihood of long term survival (since the risk of radiation induced cancers is so much less than with x-rays).

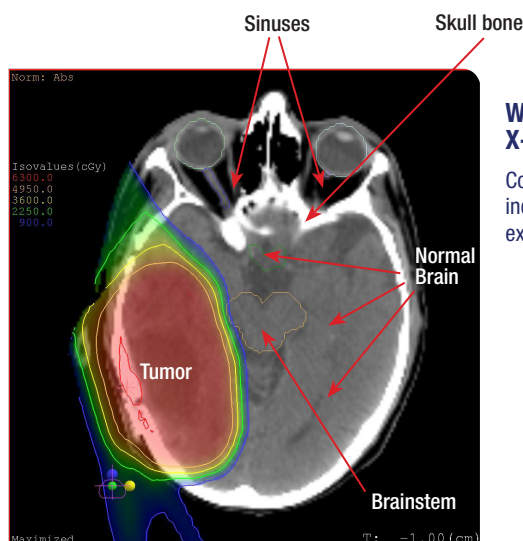
In addition, since proton therapy causes fewer side effects than X-ray radiation, it can often be used in combination with chemotherapy, as a follow-up treatment to surgery and in combination with standard X-ray radiation. You should discuss combination therapy with a radiation and a medical oncologist to decide the best treatment option.

Brain images comparing the amount of radiation to the tumor and healthy tissue.

With proton therapy (below left), most of the healthy tissue and critical organs are spared radiation. Some parts of the normal brain tissue receive 50% less radiation than with standard X-rays (below right). In some cases, the added exposure to radiation can be equivalent to receiving 400,000 dental X-rays. *Source of treatment plans: ProCure Proton Therapy Center, Oklahoma City.*

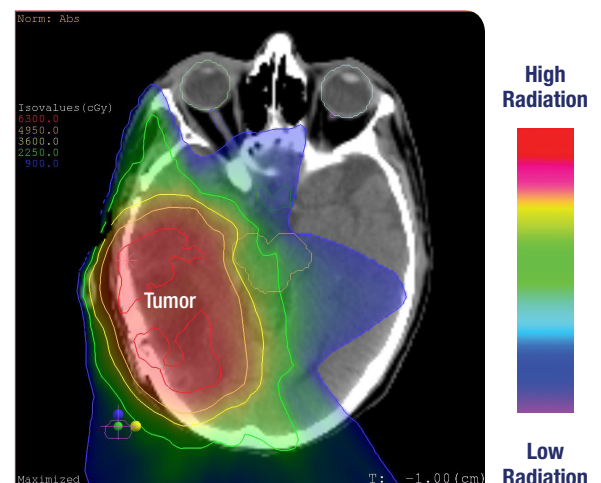
WITH PROTONS:

Grey/white area indicates no radiation exposure.



WITH STANDARD X-RAYS:

Colored area indicates radiation exposure.



Proton therapy. What to expect.

Proton therapy is given in proton centers which feature specialized, state-of-the-art medical equipment. The treatment and care is provided by doctors, medical physicists, nurses and radiation therapists who are specially trained experts. The doctor who prescribes proton therapy and manages your medical care is a radiation oncologist.

The time spent actually delivering the protons to the tumor is only a few minutes, but a treatment session can range from 15 to 60 minutes due to time spent making sure you're in just the right position for this precise treatment. After your treatment session, you can leave and go on with your normal, daily routine.

Treatments are generally given five days a week for two to nine weeks, depending on the tumor and its location.

Minimal side effects.

As with all radiation therapy, there is the potential for side effects. They can vary depending on the tumor location, your general health, other medical conditions, age and medical history. Some people experience fatigue, skin reaction or hair loss. Your doctor will talk with you about the specific side effects you may experience based on your tumor's location and your treatment plan.

Please call **866-204-9863** or visit **www.procure.com** for more information.

ProCure
Proton Therapy Center



Getting started.

Our Center is committed to making sure your needs are met and your time and dignity are respected. That's why we try to make the process easy for you. Contact us at **866-204-9863** to request a consultation with a radiation oncologist. Our team will help you gather the medical information needed and a Physician Review Board will evaluate your case to determine if proton therapy is right for you.

Great care is taken. And given.

If it's determined that you are a good candidate for proton therapy, we'll contact you to schedule a consultation with one of the radiation oncologists at the Center. Next, we'll develop a personalized and comprehensive treatment plan for you. Once the plan is finalized, we'll work with you to begin the scheduling process for your treatment. If you are not a candidate for proton therapy, we will work with you and your doctor to suggest the best course of treatment for you.

Comprehensive cancer care.

While you are receiving proton therapy, you may need additional medical care. The Center is affiliated with the INTEGRIS Cancer Institute (ICI) to provide additional medical services, especially for patients who do not have a local doctor or hospital. INTEGRIS Cancer Institute's (ICI), state-of-the-art institute, located next to our Center, offers chemotherapy, intensity modulated radiation therapy, immunotherapy, genetic counseling, blood cell transplants and radiosurgery, along with an integrated wellness center and on-site retail pharmacy. These services will be provided with the same dedication to excellent medical care and in the same compassionate, healing environment you will find at the proton center.

At the ProCure Proton Therapy Center, you'll benefit from the precision of proton therapy and the power of passionate care. **To find out more, please call 866-204-9863 or visit us at www.procure.com.**





We care for and about you.

We understand how important it is to have a professional—and personal—relationship with us as you go through treatment. Our individual Care Teams, including a radiation oncologist, nurse and radiation therapists, are dedicated to managing your therapy. The Care Team nurse will help coordinate any additional medical services you may need and make sure your personal physician is updated regularly about your progress. Your Care Team will also be there to support and guide you every step of the way.

We take care of the day-to-day needs for you and your family.

We know how stressful it can be to manage life while you undergo treatment. Our Patient Services Team has extensive knowledge on local restaurants, recreational activities and spiritual places to help make Oklahoma City feel like home for you and your family. Our team also hosts activities like the weekly patient luncheon at the center for patients and their family to share stories with and provide support for each other. If you are traveling from out of town, our team can help you arrange lodging and transportation during your treatment.

We follow through and follow up.

Our Intake Nurse will coordinate medical record exchanges and collect information needed to evaluate your individual treatment needs. Your Care Team nurse will schedule consultations, appointments and follow-up care.

Our financial counselors help too.

Our experienced counselors provide personalized help in navigating insurance coverage and payment.

Learn more about your cancer and proton therapy.

GENERAL RESOURCES

Oncolink www.oncolink.com

National Cancer Institute www.cancer.gov

American Cancer Society www.cancer.org

PATIENT SUPPORT AND ADVOCACY GROUPS

Cancer Support Community www.cancersupportcommunity.org

Help for Cancer Caregivers www.helpforcancercaregivers.org

Brotherhood of the Balloon www.protonbob.com

Living Beyond Breast Cancer www.lbbc.org

RADIATION ONCOLOGY ORGANIZATIONS

National Association for Proton Therapy www.proton-therapy.org

American Society for Radiation Oncology www.astro.org

Particle Therapy Co-Operative Group www.ptcog.ch

Paediatric Radiation Oncology Society www.intpros.org

NATIONAL CANCER ORGANIZATIONS

American Brain Tumor Foundation www.abta.org

American Breast Cancer Foundation www.abcf.org

American Childhood Cancer Organization www.acco.org

American Lung Association www.lung.org

CureSearch for Children's Cancer www.curesearch.org

Head and Neck Cancer Alliance www.headandneck.org

Prostate Cancer Foundation www.pcf.org

Sarcoma Alliance www.sarcomaalliance.org

OKLAHOMA CANCER ORGANIZATIONS

Oklahoma Brain Tumor Foundation www.okbtf.org

Oklahoma Children's Cancer Association
www.helpkidsfightcancer.org

OK Project Woman www.oklahomaprojectwoman.org

Project 31 www.project31.us

Susan G. Komen of Central and Western Oklahoma
www.komencentralwesternok.org

Directions.

The ProCure Proton Therapy Center is located in far northwest Oklahoma City on the northwest corner of MacArthur Boulevard and Memorial Road.



ProCure Proton Therapy Center,
5901 W. Memorial Road
Oklahoma City, OK 73142
866-204-9863

From Will Rogers World Airport:

Go north on Meridian (2 miles), exit right on Airport Road/I-44 Downtown. Get in the left lane; in 1/2 mile exit left onto North I-44. Stay in left lanes and merge to Lake Hefner Parkway/OK Hwy 74 (approx. 7 miles). Exit on West John Kilpatrick Turnpike/Memorial Road (7 miles). Turn left (west), go 1 1/2 miles to MacArthur Blvd.

From I-40 West:

Coming past Yukon, OK, exit and go north on the John Kilpatrick Turnpike. Exit on MacArthur Blvd. (approximately 12 miles)

From I-35 South:

Take I-235N/US-77N. Take the John Kilpatrick turnpike exit. Take the MacArthur Blvd. exit.

From I-44 Tulsa:

Continue on Turnpike. Cross over I-35 and this turns into John Kilpatrick Turnpike. Go 10 miles, exit MacArthur Blvd.

From I-40 East:

Take the I-235N/US-77N toward Edmond. Take the John Kilpatrick Turnpike exit. Take the MacArthur Blvd. exit.

Leaders in radiation oncology.

The radiation oncologists of Radiation Medicine Associates (RMA) provide clinical care to patients at the Center. They will coordinate with your personal doctor and medical team, from the time of your evaluation at the Center through your treatment and follow-up care. RMA is the first physician group in Oklahoma to be able to treat patients with proton therapy.

RMA is the state's leading radiation oncology practice. Together, the team of radiation oncologists has more than 175 years of experience in the field and is known for clinical excellence and for pioneering new technologies and new approaches to patient care.

RMA was among the first radiation oncology practices in the state to offer advanced radiation treatments including intensity modulated radiation therapy, stereotactic radiosurgery (including Gamma knife and cyberknife), conformal radiation therapy, brachytherapy and Tomo Therapy. With specializations in brain, head and neck, prostate, breast, lung, genitourinary, gastrointestinal and pediatric cancers, RMA radiation oncologists have the expertise to provide the highest level of medical care to patients and are affiliated with a number of hospitals in Oklahoma.



09



Please call **866-204-9863** or visit **www.procure.com** for more information.

ProCure
Proton Therapy Center



About the ProCure Proton Therapy Center

**5901 W. Memorial Rd.
Oklahoma City, Oklahoma 73142**

The ProCure Proton Therapy Center in Oklahoma City is the sixth center in the nation to treat a broad range of tumor sites with proton therapy. Clinical care is provided by the state's leading radiation oncology practice, Radiation Medicine Associates (RMA), and additional medical services are available at the INTEGRIS Cancer Institute (ICI), located adjacent to the Center.

To find out more, please call the Center at 866-204-9863 or visit us at www.procure.com.



PROCURE PROTON THERAPY CENTER
5901 W. Memorial Rd.
Oklahoma City, Oklahoma 73142

To learn more about the advantages of proton therapy,
please call 866-204-9863 or visit www.procure.com.