

Proton Therapy for Patients with Gastrointestinal Tumors

Talk to your doctor about how proton therapy can help.

Gastrointestinal

Precision Therapy. Fewer side effects.

Proton therapy is an advanced form of radiation cancer treatment that precisely targets tumors. Because this precision causes less damage to healthy tissue, proton therapy patients experience fewer side effects than with standard X-ray radiation. Proton therapy is effective in treating a broad range of tumors including brain, prostate, head and neck, central nervous system, lung, sarcoma, gastrointestinal (GI) and many pediatric cancers.

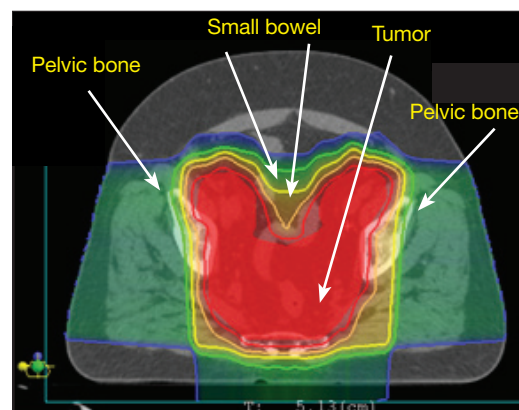
Particularly effective in treating tumors of the GI tract.

Treatment for GI tract tumors often requires a combination of radiation therapy and either chemotherapy or surgery. The combination of these therapies can be difficult for patients to tolerate. In some cases, standard radiation isn't a viable treatment option for patients because it would cause too much damage to the healthy tissues and organs adjacent to the tumor. This is not an issue with proton therapy because protons deposit more energy directly in the tumor and significantly reduce the dose to healthy tissues. Patients treated with proton therapy for GI tract tumors often experience fewer side effects.

Anal canal cancer treated with protons.

With proton therapy, less healthy tissue in the pelvic bone and the small bowel receives radiation compared to X-rays/IMRT.

Grey/white area indicates no radiation exposure.



High
Radiation

Low
Radiation

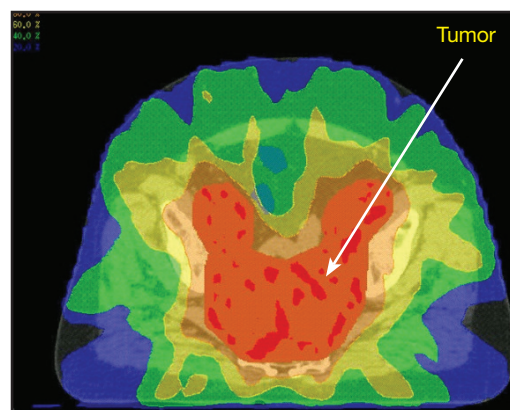
GI tract tumors most appropriate for proton therapy include:

- Esophagus
- Stomach
- Pancreas
- Liver
- Rectum
- Anal canal

The most important benefit of proton therapy is that protons result in less damage to healthy tissue compared to other forms of radiation treatment so patients experience fewer side effects.

Anal canal cancer treated with X-rays/IMRT.

With X-rays/IMRT, more healthy tissue around the tumor receives radiation. In some instances, the additional dose of radiation that healthy tissue receives from X-ray radiation therapy can be as much as several hundred thousand dental X-rays. *Colored area indicates radiation exposure.*



Call a ProCure center for more information.

ProCure Proton Therapy Center in Oklahoma City 866-204-9863
CDH Proton Center, A ProCure Center in suburban Chicago 630-393-7030

Source of treatment plans:
ProCure Training and Development Center.

ProCure
Proton Therapy Center

Be prepared when talking to your doctor about your treatment options, including proton therapy.

It is important to consider all of your treatment options before you decide on one. The first step is discussing your options, including proton therapy, with your doctor to determine the best treatment for you. Your doctor may not be as familiar with proton therapy as with other treatment options so be sure to **bring this sheet with you**.

Below are a few questions to help you discuss proton therapy with your doctor:

- Is proton therapy an option for me? What are the pros and cons?

- How does proton therapy compare with my other options?

- What short-term and long-term side effects or complications can I expect with each treatment option?

- How long would my treatment last—at each appointment and the entire course?

- Where do I go to receive proton therapy?

- Once I have decided a course of treatment, what are the next steps?

Frequently asked questions:

Can proton therapy be used in conjunction with other forms of cancer treatment?

Yes. Depending on the diagnosis, proton therapy may be used in combination with conventional radiation, chemotherapy, hormone therapy and/or as a follow-up to surgery.

Proton therapy is a precise, effective option with fewer side effects than traditional radiation therapy.

To learn more about the benefits of proton therapy or to request a consultation, call our centers at:

ProCure Proton Therapy Center in Oklahoma City
866-204-9863

CDH Proton Center, A ProCure Center in suburban Chicago
630-393-7030

Is proton therapy covered by most insurance plans?

Proton therapy is covered by most insurance providers nationwide and the U.S. Medicare program. The financial counselors at ProCure will work with you and your insurance provider to get you all the coverage information you may need.

What will I feel like during the course of my proton therapy? What are the side effects?

There is no discomfort or sensation during the actual radiation treatment. Most patients with tumors of the gastrointestinal (GI) tract have few, or very mild, side effects from proton therapy. If you do experience any side effects they can be managed with medications, if necessary.